

## Which bin should it go in?

### RECYCLING BIN



Envelopes



Clean metal tins



Drinks cans



Toilet roll tubes



Cardboard cereal boxes



Clean yogurt pots



Plastic bottles



Clean plastic food trays

### RUBBISH BIN



Greasy pizza boxes



Nappy



Food on packaging



Cling film



Black bags



Toothbrushes

### Search tool

Find out what to do with your waste by using the Surrey Recycles search tool at [surreyep.org.uk](https://surreyep.org.uk) or downloading it as an app.

While you're there why not play our waste sorting game and test your knowledge.

# Surrey Recycling DETECTIVES



Name \_\_\_\_\_

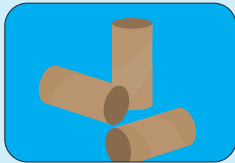
**Remember** – Recycle items *clean, dry and loose*.

# CALLING ALL DETECTIVES

Track down the items below in your home and count how many of them you put in the right bin.  
Use the list on the back to help you.



Item



Toilet roll tubes



Nappies



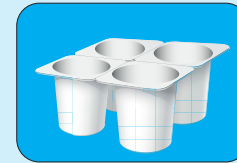
Envelopes



Greasy  
pizza boxes



Plastic bottles



Clean plastic  
tubs



Cardboard  
cereal boxes

Recycling bin

Rubbish bin

Item



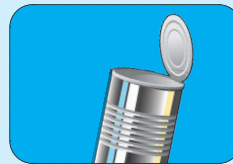
Food on  
packaging



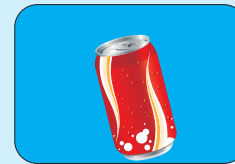
Toothbrushes



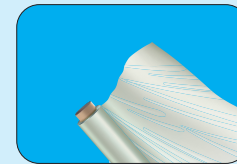
Clean plastic  
food tray



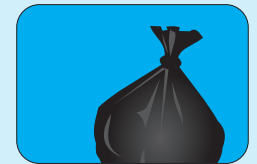
Clean metal tins



Drinks cans



Cling film



Black bags

Recycling bin

Rubbish bin